



CITY OF BROOKFIELD

REZONE EXHIBIT A-1

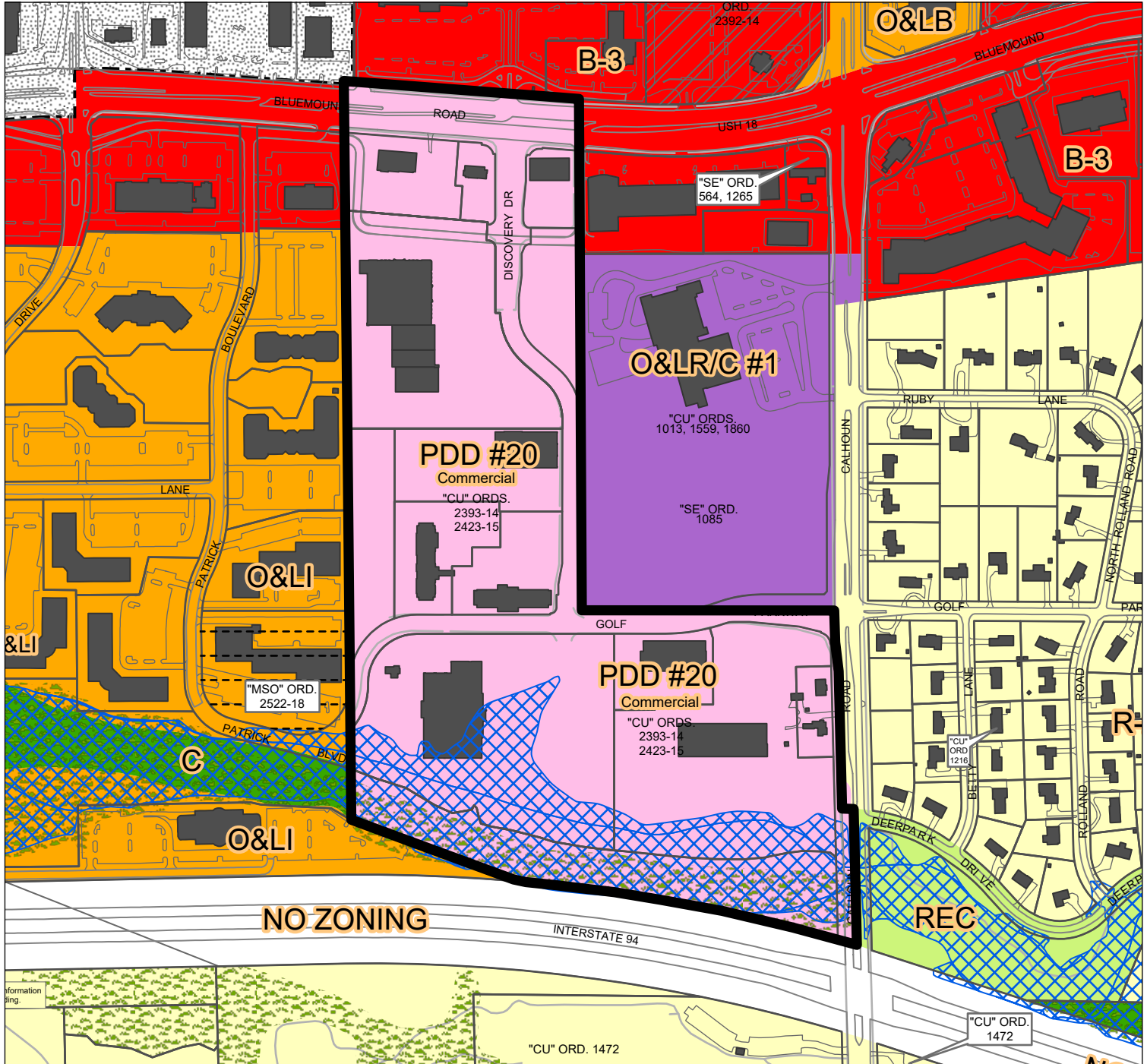
"PDD" Planned Development District Commercial (Mixed Use) Number 20

LANDS WITHIN ZONING AMENDMENT TO "PDD" PLANNED DEVELOPMENT DISTRICT COMMERCIAL (MIXED USE) NUMBER 20



Indicates lands with zoning amendment to "PDD" PLANNED DEVELOPMENT DISTRICT COMMERCIAL (MIXED USE) NUMBER 20

Description of lands to be rezoned can be found on Exhibit A-2.



Drafted by: ROV Date: 06/27/2023
Edited by: ROV Scale: 1 inch = 500 feet

Descriptors other than legal description and zoning classification are for information only.

TO THE USER

This map data is provided by the City of Brookfield for informational purposes only. The City does not warrant or guarantee the accuracy or reliability of this data. Users of this data assume any risk for any purpose.

Prepared by:
CITY OF BROOKFIELD
Dep. of Community Development

Checked by:
CITY OF BROOKFIELD
Dep. of Community Development

