

ORDINANCE NO. 2105-07
by the Plan Commission

ORDINANCE ESTABLISHING PERMANENT ZONING ON LANDS ANNEXED BY ORDINANCE
NOS. 2010-05 and 2083-06 FROM THE TOWN OF BROOKFIELD

WHEREAS, City of Brookfield Ordinance Nos. 2010-05 and 2083-06 adopted by the Common Council on May 3, 2005, and November 7, 2006, annexed 74.0621 acres from the Town of Brookfield, located south of Lisbon Road and east of Lannon Road (aka Finger/Haasch and Eisenmann annexations); and

WHEREAS, these lands will comprise of a future subdivision in the City of Brookfield called Northern Oaks; and

WHEREAS, there are wetlands on the site that must be regulated as rigorously as they were prior to annexation and the City's continued participation in FEMA's National Flood Insurance Program requires that floodplain annexed to the City be regulated via floodplain overlay zoning.

WHEREAS, Section 17.16 of the Municipal Code provides for "C" Conservancy base district zoning of lands impacted by wetlands and floodplains.

WHEREAS, the plan commission recommended a temporary and permanent base zoning of "R-2" Single family Residential District for those lands not impacted by wetland.

NOW, THEREFORE, the City of Brookfield Common Council do ordain as follows:

Part I. The property known as the Finger/Haasch and Eisenmann annexations shall be zoned as described in Exhibits "A-1", "A-2", "A-3", "A-4" and as depicted in Exhibit "A" which exhibits are incorporated herein by reference and the official City zoning map shall be changed accordingly:

- Lands zoned to "R-2" (Single Family Residential District)
- Lands zoned to "C" (Conservancy District) with "NSW" (Non-Shoreland Wetland) Overlay
- Lands zoned to "FF" (Flood Fringe) Overlay

Part II. Said zoning shall be applied on lands annexed by Ordinance Nos. 2010-05 and 2083-06, comprising a future subdivision called Northern Oaks of Brookfield.

ADOPTED AND APPROVED ON August 21, 2007

Kristine A. Schmidt, City Clerk

Jeff R. Speaker, Mayor

* Can be viewed in the City Clerk's office.

Published: August 30, 2007

CITY OF BROOKFIELD REZONING EXHIBIT "A"

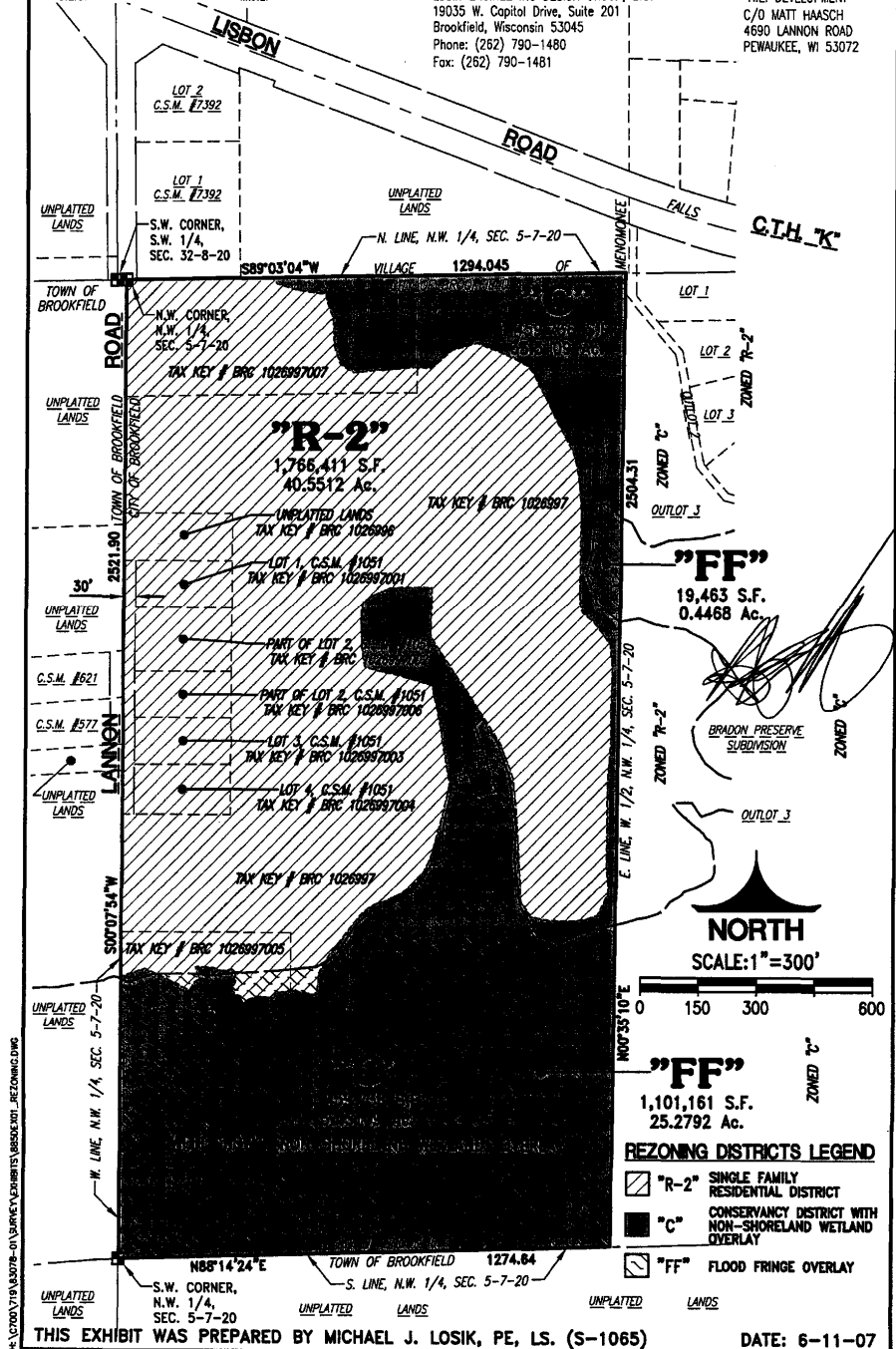
LANDS TO BE ZONED "R-2" & "C" WITH "NSW" AND "FF" OVERLAY

DRAWN BY:
G.L.G.

CHECKED BY:
M.J.L.

PREPARED BY:
LOSIK ENGINEERING DESIGN GROUP, LTD.
19035 W. Capitol Drive, Suite 201
Brookfield, Wisconsin 53045
Phone: (262) 790-1480
Fax: (262) 790-1481

DEVELOPER:
"H.E. DEVELOPMENT"
C/O MATT HAASCH
4690 LANNON ROAD
PEWAUKEE, WI 53072



H:\CITY\19\03078-01\BRIEF\EXHIBITS\BROOKFIELD_REZONING.DWG

THIS EXHIBIT WAS PREPARED BY MICHAEL J. LOSIK, PE, LS. (S-1065)

DATE: 6-11-07

EXHIBIT "A-4"

"NORTHERN OAKS" LANDS TO BE ZONED "FF" (FLOOD FRINGE) OVERLAY

LEGAL DESCRIPTION:

All that part of the Northwest 1/4 of the Northwest 1/4 of Section 5, Town 7 North, Range 20 East, in the City of Brookfield, Waukesha County, Wisconsin, now being more particularly bounded and described as follows:

Commencing at the Northwest corner of the said Northwest 1/4 Section; Thence North 89°03'04" East and along the North line of the said Northwest 1/4 Section, 1294.045 feet to a point; Thence South 00°35'10" West and along the East line of the West 1/2 of the said Northwest 1/4 Section, 629.84 feet to the place of beginning of lands hereinafter described;

Continuing thence South 00°35'10" West and along the said East line of the said West 1/2, 264.71 feet to a point; Thence North 52°00'15" West, 76.09 feet to a point; Thence North 20°31'32" West, 83.46 feet to a point; Thence North 17°49'33" East, 49.04 feet to a point; Thence North 06°03'12" East, 125.72 feet to a point; Thence North 78°45'29" East, 24.51 feet to a point; Thence South 47°07'13" East, 54.07 feet to the point of beginning of this description.

Said Parcel contains 19,463 Square Feet (or 0.4468 Acres) of land, more or less.

Date: 06/11/07



A handwritten signature in black ink, appearing to read "Michael J. Losik", written over a horizontal line.

Michael J. Losik, P.E., L.S.
President
LOSIK ENGINEERING DESIGN GROUP, LTD.
19035 W. Capitol Drive - Suite 201
Brookfield, WI 53045
Phone: (262)790-1480 Fax:(262)790-1481

EXHIBIT "A-1"

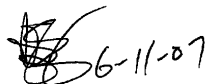
"NORTHERN OAKS" LANDS TO BE ZONED "R-2" (SINGLE FAMILY RESIDENTIAL DISTRICT)

LEGAL DESCRIPTION:

All that part of the Northwest 1/4 and Southwest 1/4 of the Northwest 1/4 of Section 5, Town 7 North, Range 20 East, in the City of Brookfield, Waukesha County, Wisconsin, now being more particularly bounded and described as follows:

Commencing at the Northwest corner of the said Northwest 1/4 Section, said point being the place of beginning of lands hereinafter described;

Thence North 89°03'04" East and along the North line of the said Northwest 1/4 Section, 376.625 feet to a point; Thence South 42°45'08" East, 20.83 feet to a point; Thence South 72°38'05" East, 55.15 feet to a point; Thence South 81°59'25" East, 45.38 feet to a point; Thence South 82°29'05" East, 30.74 feet to a point; Thence South 06°24'32" East, 18.05 feet to a point; Thence South 20°12'14" East, 44.09 feet to a point; Thence South 04°11'08" East, 76.70 feet to a point; Thence South 18°01'58" East, 46.24 feet to a point; Thence South 58°48'19" East, 41.77 feet to a point; Thence North 84°09'40" East, 88.41 feet to a point; Thence North 85°08'30" East, 68.90 feet to a point; Thence South 87°24'40" East, 45.47 feet to a point; Thence North 48°39'14" East, 70.47 feet to a point; Thence North 73°48'52" East, 67.68 feet to a point; Thence South 68°13'26" East, 75.34 feet to a point; Thence South 63°22'27" East, 69.09 feet to a point; Thence South 37°20'01" East, 25.74 feet to a point; Thence South 25°33'44" East, 28.38 feet to a point; Thence South 26°41'51" East, 63.16 feet to a point; Thence South 25°29'54" East, 57.88 feet to a point; Thence South 28°02'03" East, 79.16 feet to a point; Thence South 14°02'12" East, 55.55 feet to a point; Thence South 07°03'01" East, 53.23 feet to a point; Thence South 01°58'19" East, 53.82 feet to a point; Thence South 01°20'09" West, 51.98 feet to a point; Thence South 00°32'04" West, 54.26 feet to a point; Thence South 01°35'12" West, 56.71 feet to a point; Thence South 00°12'48" West, 58.54 feet to a point; Thence South 17°40'15" East, 25.16 feet to a point; Thence South 48°57'40" East, 38.50 feet to a point; Thence South 38°17'25" East, 35.43 feet to a point; Thence South 33°56'36" East, 38.05 feet to a point; Thence South 05°46'45" East, 59.77 feet to a point; Thence South 01°44'39" West, 50.00 feet to a point; Thence South 01°29'27" West, 80.34 feet to a point; Thence South 00°01'01" East, 55.43 feet to a point; Thence South 03°54'54" West, 110.46 feet to a point; Thence South 01°21'24" West, 67.59 feet to a point; Thence South 00°01'40" West, 63.29 feet to a point; Thence South 00°42'01" West, 82.32 feet to a point; Thence South 05°46'51" East, 65.70 feet to a point; Thence South 25°41'05" West, 23.78 feet to a point; Thence South 25°34'46" West, 41.37 feet to a point; Thence South 70°35'59" West, 30.27 feet to a point; Thence South 82°16'58" West, 31.07 feet to a point; Thence North 90°00'00" West, 41.25 feet to a point; Thence North 85°01'59" West, 40.55 feet to a point; Thence North 77°03'57" West, 31.95 feet to a point; Thence North 32°41'31" West, 46.69 feet to a point; Thence North 04°03'23" West, 86.74 feet to a point; Thence North 02°51'21" West, 63.47 feet to a point; Thence North 02°51'21" West, 39.47 feet to a point; Thence North 04°07'30" West, 40.41 feet to a point; Thence North 05°43'47" West, 83.36 feet to a point; Thence North 21°00'04" West, 11.42 feet to a point; Thence North 20°04'35" West, 33.31 feet to a point; Thence North 21°53'33" West, 42.99 feet to a point; Thence North 32°07'24" West, 19.15 feet to a point; Thence North 31°19'54" West, 34.95 feet to a point; Thence North 33°08'02" West, 33.79 feet to a point; Thence North 32°20'15" West, 32.60 feet to a point; Thence North 31°57'05" West, 33.57 feet to a point; Thence North 34°30'39" West, 24.90 feet to a point; Thence North 34°12'25" West, 44.33 feet to a point; Thence North 33°08'01" West, 48.58 feet to a point; Thence North 34°32'07" West, 37.63 feet to a point; Thence North 29°56'40" West, 23.04 feet to a point; Thence North 21°29'21" West, 8.28 feet to a point; Thence North 00°40'38" East, 123.71 feet to a point; Thence North 89°01'26" West, 21.85 feet to a point; Thence South 89°48'57" West, 56.60 feet to a point; Thence South 85°14'16" West, 33.70 feet to a point; Thence South 63°57'18" West, 30.26 feet to a point; Thence South 64°36'12" West, 21.09



Legal Description of Lands to be Zoned "R-2" Continued:

feet to a point; Thence South 53°51'01" West, 25.23 feet to a point; Thence South 10°05'39" West, 15.65 feet to a point; Thence South 02°31'00" West, 42.24 feet to a point; Thence South 03°37'49" East, 39.48 feet to a point; Thence South 03°37'49" East, 34.19 feet to a point; Thence South 08°18'54" East, 27.87 feet to a point; Thence South 11°14'48" East, 10.11 feet to a point; Thence South 74°32'36" East, 35.81 feet to a point; Thence South 81°09'18" East, 13.57 feet to a point; Thence South 81°04'20" East, 26.73 feet to a point; Thence South 73°23'05" East, 82.96 feet to a point; Thence South 76°35'23" East, 18.88 feet to a point; Thence South 36°07'24" East, 5.15 feet to a point; Thence South 09°11'58" East, 28.46 feet to a point; Thence South 15°16'48" East, 26.57 feet to a point; Thence South 10°04'48" East, 34.26 feet to a point; Thence South 11°37'09" East, 32.23 feet to a point; Thence South 01°40'31" East, 17.99 feet to a point; Thence South 09°34'03" East, 12.32 feet to a point; Thence South 14°49'18" East, 16.89 feet to a point; Thence South 15°13'13" East, 7.60 feet to a point; Thence South 09°25'56" East, 21.52 feet to a point; Thence South 09°25'06" East, 32.37 feet to a point; Thence South 09°24'42" East, 23.63 feet to a point; Thence South 10°25'21" West, 26.60 feet to a point; Thence South 13°42'38" West, 54.92 feet to a point; Thence South 15°30'45" West, 92.43 feet to a point; Thence South 18°58'31" West, 33.38 feet to a point; Thence South 27°47'49" West, 41.26 feet to a point; Thence South 43°53'04" West, 35.58 feet to a point; Thence South 56°19'02" West, 32.01 feet to a point; Thence South 63°50'41" West, 31.33 feet to a point; Thence South 66°27'13" West, 20.99 feet to a point; Thence South 70°01'19" West, 28.87 feet to a point; Thence South 53°53'17" West, 22.59 feet to a point; Thence South 43°07'19" West, 18.27 feet to a point; Thence South 40°26'02" West, 27.87 feet to a point; Thence South 37°50'32" West, 98.00 feet to a point; Thence South 31°22'13" West, 48.31 feet to a point; Thence South 20°15'38" West, 12.94 feet to a point; Thence South 04°36'12" West, 34.30 feet to a point; Thence South 19°41'06" West, 20.95 feet to a point; Thence North 69°57'41" West, 15.98 feet to a point; Thence South 85°52'41" West, 17.66 feet to a point; Thence North 60°43'19" West, 23.59 feet to a point; Thence South 70°25'50" West, 11.47 feet to a point; Thence South 81°31'44" West, 21.58 feet to a point; Thence South 80°16'14" West, 14.75 feet to a point; Thence South 31°13'20" West, 14.69 feet to a point; Thence North 85°05'28" West, 42.37 feet to a point; Thence South 69°36'49" West, 25.59 feet to a point; Thence South 48°24'20" West, 16.43 feet to a point; Thence North 19°28'30" West, 20.03 feet to a point; Thence North 69°24'08" West, 11.79 feet to a point; Thence North 44°29'58" West, 15.42 feet to a point; Thence North 20°41'17" East, 25.40 feet to a point; Thence North 01°05'24" East, 14.61 feet to a point; Thence North 09°12'12" West, 12.25 feet to a point; Thence North 52°44'33" West, 7.41 feet to a point; Thence South 82°49'31" West, 29.15 feet to a point; Thence North 69°13'13" West, 23.97 feet to a point; Thence North 87°32'16" West, 44.37 feet to a point; Thence South 09°44'36" East, 14.18 feet to a point; Thence South 24°57'13" East, 18.57 feet to a point; Thence South 57°01'15" West, 14.25 feet to a point; Thence South 32°40'17" West, 27.49 feet to a point; Thence North 61°07'57" West, 41.61 feet to a point; Thence North 65°31'17" West, 9.69 feet to a point; Thence North 63°44'56" West, 32.19 feet to a point; Thence North 65°36'51" West, 45.45 feet to a point; Thence South 71°10'31" West, 65.40 feet to a point on the West line of the said Northwest 1/4 Section; Thence North 00°07'54" East and along the said West line, 1788.04 feet to the point of beginning of this description.

Said Parcel contains 1,766,411 Square Feet (or 40.5512 Acres) of land, more or less.

Date: 06/11/07





Michael J. Losik, P.E., L.S.
President
LOSIK ENGINEERING DESIGN GROUP, LTD.
19035 W. Capitol Drive - Suite 201
Brookfield, WI 53045
Phone: (262)790-1480 Fax:(262)790-1481

EXHIBIT "A-2"

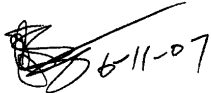
"NORTHERN OAKS" LANDS TO BE ZONED "C" (CONSERVANCY DISTRICT) WITH "NSW" (NON-SHORELAND WETLAND) OVERLAY

LEGAL DESCRIPTION:

All that part of the Northwest 1/4 and Southwest 1/4 of the Northwest 1/4 of Section 5, Town 7 North, Range 20 East, in the City of Brookfield, Waukesha County, Wisconsin, now being more particularly bounded and described as follows:

Commencing at the Northwest corner of the said Northwest 1/4 Section; Thence North 89°03'04" East and along the North line of the said Northwest 1/4 Section, 376.625 feet to the place of beginning of lands hereinafter described;

Thence South 42°45'08" East, 20.83 feet to a point; Thence South 72°38'05" East, 55.15 feet to a point; Thence South 81°59'25" East, 45.38 feet to a point; Thence South 82°29'05" East, 30.74 feet to a point; Thence South 06°24'32" East, 18.05 feet to a point; Thence South 20°12'14" East, 44.09 feet to a point; Thence South 04°11'08" East, 76.70 feet to a point; Thence South 18°01'58" East, 46.24 feet to a point; Thence South 58°48'19" East, 41.77 feet to a point; Thence North 84°09'40" East, 88.41 feet to a point; Thence North 85°08'30" East, 68.90 feet to a point; Thence South 87°24'40" East, 45.47 feet to a point; Thence North 48°39'14" East, 70.47 feet to a point; Thence North 73°48'52" East, 67.68 feet to a point; Thence South 68°13'26" East, 75.34 feet to a point; Thence South 63°22'27" East, 69.09 feet to a point; Thence South 37°20'01" East, 25.74 feet to a point; Thence South 25°33'44" East, 28.38 feet to a point; Thence South 26°41'51" East, 63.16 feet to a point; Thence South 25°29'54" East, 57.88 feet to a point; Thence South 28°02'03" East, 79.16 feet to a point; Thence South 14°02'12" East, 55.55 feet to a point; Thence South 07°03'01" East, 53.23 feet to a point; Thence South 01°58'19" East, 53.82 feet to a point; Thence South 01°20'09" West, 51.98 feet to a point; Thence South 00°32'04" West, 54.26 feet to a point; Thence South 01°35'12" West, 56.71 feet to a point; Thence South 00°12'48" West, 58.54 feet to a point; Thence South 17°40'15" East, 25.16 feet to a point; Thence South 48°57'40" East, 38.50 feet to a point; Thence South 38°17'25" East, 35.43 feet to a point; Thence South 33°56'36" East, 38.05 feet to a point; Thence South 05°46'45" East, 59.77 feet to a point; Thence South 01°44'39" West, 50.00 feet to a point; Thence South 01°29'27" West, 80.34 feet to a point; Thence South 00°01'01" East, 55.43 feet to a point; Thence South 03°54'54" West, 110.46 feet to a point; Thence South 01°21'24" West, 67.59 feet to a point; Thence South 00°01'40" West, 63.29 feet to a point; Thence South 00°42'01" West, 82.32 feet to a point; Thence South 05°46'51" East, 65.70 feet to a point; Thence South 25°41'05" West, 23.78 feet to a point; Thence South 25°34'46" West, 41.37 feet to a point; Thence South 70°35'59" West, 30.27 feet to a point; Thence South 82°16'58" West, 31.07 feet to a point; Thence North 90°00'00" West, 41.25 feet to a point; Thence North 85°01'59" West, 40.55 feet to a point; Thence North 77°03'57" West, 31.95 feet to a point; Thence North 32°41'31" West, 46.69 feet to a point; Thence North 04°03'23" West, 86.74 feet to a point; Thence North 02°51'21" West, 63.47 feet to a point; Thence North 02°51'21" West, 39.47 feet to a point; Thence North 04°07'30" West, 40.41 feet to a point; Thence North 05°43'47" West, 83.36 feet to a point; Thence North 21°00'04" West, 11.42 feet to a point; Thence North 20°04'35" West, 33.31 feet to a point; Thence North 21°53'33" West, 42.99 feet to a point; Thence North 32°07'24" West, 19.15 feet to a point; Thence North 31°19'54" West, 34.95 feet to a point; Thence North 33°08'02" West, 33.79 feet to a point; Thence North 32°20'15" West, 32.60 feet to a point; Thence North 31°57'05" West, 33.57 feet to a point; Thence North 34°30'39" West, 24.90 feet to a point; Thence North 34°12'25" West, 44.33 feet to a point; Thence North 33°08'01" West, 48.58 feet to a point; Thence North 34°32'07" West, 37.63 feet to a point; Thence North 29°56'40" West, 23.04 feet to a point; Thence North 21°29'21" West, 8.28 feet to a point; Thence North 00°40'38" East, 123.71 feet to a point; Thence North 89°01'26" West, 21.85 feet to a point; Thence South 89°48'57" West, 56.60 feet to a point; Thence South 85°14'16" West, 33.70 feet to a point; Thence South 63°57'18" West, 30.26 feet to a point; Thence South 64°36'12" West, 21.09 feet to a point; Thence South 53°51'01" West, 25.23 feet to a point; Thence South 10°05'39"

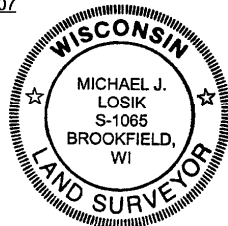


Legal Description of Lands to be Zoned "C" Continued:

West, 15.65 feet to a point; Thence South 02°31'00" West, 42.24 feet to a point; Thence South 03°37'49" East, 39.48 feet to a point; Thence South 03°37'49" East, 34.19 feet to a point; Thence South 08°18'54" East, 27.87 feet to a point; Thence South 11°14'48" East, 10.11 feet to a point; Thence South 74°32'36" East, 35.81 feet to a point; Thence South 81°09'18" East, 13.57 feet to a point; Thence South 81°04'20" East, 26.73 feet to a point; Thence South 73°23'05" East, 82.96 feet to a point; Thence South 76°35'23" East, 18.88 feet to a point; Thence South 36°07'24" East, 5.15 feet to a point; Thence South 09°11'58" East, 28.46 feet to a point; Thence South 15°16'48" East, 26.57 feet to a point; Thence South 10°04'48" East, 34.26 feet to a point; Thence South 11°37'09" East, 32.23 feet to a point; Thence South 01°40'31" East, 17.99 feet to a point; Thence South 09°34'03" East, 12.32 feet to a point; Thence South 14°49'18" East, 16.89 feet to a point; Thence South 15°13'13" East, 7.60 feet to a point; Thence South 09°25'56" East, 21.52 feet to a point; Thence South 09°25'06" East, 32.37 feet to a point; Thence South 09°24'42" East, 23.63 feet to a point; Thence South 10°25'21" West, 26.60 feet to a point; Thence South 13°42'38" West, 54.92 feet to a point; Thence South 15°30'45" West, 92.43 feet to a point; Thence South 18°58'31" West, 33.38 feet to a point; Thence South 27°47'49" West, 41.26 feet to a point; Thence South 43°53'04" West, 35.58 feet to a point; Thence South 56°19'02" West, 32.01 feet to a point; Thence South 63°50'41" West, 31.33 feet to a point; Thence South 66°27'13" West, 20.99 feet to a point; Thence South 70°01'19" West, 28.87 feet to a point; Thence South 53°53'17" West, 22.59 feet to a point; Thence South 43°07'19" West, 18.27 feet to a point; Thence South 40°26'02" West, 27.87 feet to a point; Thence South 37°50'32" West, 98.00 feet to a point; Thence South 31°22'13" West, 48.31 feet to a point; Thence South 20°15'38" West, 12.94 feet to a point; Thence South 04°36'12" West, 34.30 feet to a point; Thence South 19°41'06" West, 20.95 feet to a point; Thence North 69°57'41" West, 15.98 feet to a point; Thence South 85°52'41" West, 17.66 feet to a point; Thence North 60°43'19" West, 23.59 feet to a point; Thence South 70°25'50" West, 11.47 feet to a point; Thence South 81°31'44" West, 21.58 feet to a point; Thence South 80°16'14" West, 14.75 feet to a point; Thence South 31°13'20" West, 14.69 feet to a point; Thence North 85°05'28" West, 42.37 feet to a point; Thence South 69°36'49" West, 25.59 feet to a point; Thence South 48°24'20" West, 16.43 feet to a point; Thence North 19°28'30" West, 20.03 feet to a point; Thence North 69°24'08" West, 11.79 feet to a point; Thence North 44°29'58" West, 15.42 feet to a point; Thence North 20°41'17" East, 25.40 feet to a point; Thence North 01°05'24" East, 14.61 feet to a point; Thence North 09°12'12" West, 12.25 feet to a point; Thence North 52°44'33" West, 7.41 feet to a point; Thence South 82°49'31" West, 29.15 feet to a point; Thence North 69°13'13" West, 23.97 feet to a point; Thence North 87°32'16" West, 44.37 feet to a point; Thence South 09°44'36" East, 14.18 feet to a point; Thence South 24°57'13" East, 18.57 feet to a point; Thence South 57°01'15" West, 14.25 feet to a point; Thence South 32°40'17" West, 27.49 feet to a point; Thence North 61°07'57" West, 41.61 feet to a point; Thence North 65°31'17" West, 9.69 feet to a point; Thence North 63°44'56" West, 32.19 feet to a point; Thence North 65°36'51" West, 45.45 feet to a point; Thence South 71°10'31" West, 65.40 feet to a point on the West line of the said Northwest 1/4 Section; Thence South 00°07'54" West and along the said West line, 733.86 feet to a point, said point being the Southwest corner of the said Northwest 1/4 Section; Thence North 88°14'24" East and along the South line of the said Northwest 1/4 Section, 1274.64 feet to a point; Thence North 00°35'10" East and along the East line of the West 1/2 of the said Northwest 1/4 Section, 2504.31 feet to a point on the said North line of the said Northwest 1/4 Section; Thence South 89°03'04" West and along the said North line, 917.42 feet to the point of beginning of this description.

Said Parcel contains 1,459,736 Square Feet (or 33.5109 Acres) of land, more or less.

Date: 06/11/07



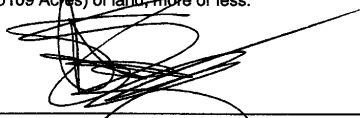

Michael J. Losik, P.E., L.S.
President
LOSIK ENGINEERING DESIGN GROUP, LTD.
19035 W. Capitol Drive - Suite 201
Brookfield, WI 53045
Phone: (262)790-1480 Fax: (262)790-1481

EXHIBIT "A-3"

"NORTHERN OAKS" LANDS TO BE ZONED "FF" (FLOOD FRINGE) OVERLAY

LEGAL DESCRIPTION:

All that part of the Northwest 1/4 and Southwest 1/4 of the Northwest 1/4 of Section 5, Town 7 North, Range 20 East, in the City of Brookfield, Waukesha County, Wisconsin, now being more particularly bounded and described as follows:


Commencing at the Northwest corner of the said Northwest 1/4 Section; Thence South 00°07'54" West and along the West line of the said Northwest 1/4 Section, 1793.50 feet to the place of beginning of lands hereinafter described;

Thence South 64°39'06" East, 21.02 feet to a point; Thence North 71°55'56" East, 67.38 feet to a point; Thence North 89°05'10" East, 91.60 feet to a point; Thence South 85°51'26" East, 64.49 feet to a point; Thence North 83°03'31" East, 53.62 feet to a point; Thence North 86°45'30" East, 110.61 feet to a point; Thence North 84°18'25" East, 107.04 feet to a point; Thence North 58°49'50" East, 52.64 feet to a point; Thence North 34°14'46" East, 98.47 feet to a point; Thence North 48°46'14" East, 64.15 feet to a point; Thence North 70°25'14" East, 76.62 feet to a point; Thence North 45°51'58" East, 65.55 feet to a point; Thence North 31°22'09" East, 47.73 feet to a point; Thence North 72°41'08" East, 31.75 feet to a point; Thence North 01°20'39" East, 88.47 feet to a point; Thence North 12°22'36" East, 130.40 feet to a point; Thence North 75°36'27" East, 38.16 feet to a point; Thence South 19°02'19" East, 61.54 feet to a point; Thence North 78°02'44" East, 53.18 feet to a point; Thence North 18°54'06" West, 176.42 feet to a point; Thence North 46°44'30" East, 26.73 feet to a point; Thence South 31°39'56" East, 73.37 feet to a point; Thence South 21°12'38" East, 85.74 feet to a point; Thence South 08°48'44" East, 135.26 feet to a point; Thence South 04°28'48" West, 84.51 feet to a point; Thence South 08°53'34" East, 119.31 feet to a point; Thence South 31°10'27" East, 91.47 feet to a point; Thence South 75°57'51" East, 58.45 feet to a point; Thence North 65°34'17" East, 69.05 feet to a point; Thence North 77°32'10" East, 80.13 feet to a point on the East line of the West 1/2 of the said Northwest 1/4 Section; Thence South 00°35'10" West and along the said East line of the said West 1/2, 832.40 feet to a point on the South line of the said Northwest 1/4 Section; Thence South 88°14'24" West and along the said South line, 1274.64 feet to a point, said point being the Southwest corner of the said Northwest 1/4 Section; Thence North 00°07'54" East and along the said West line of the said Northwest 1/4 Section, 728.40 feet to the point of beginning of this description.

Said Parcel contains 1,101,161 Square Feet (or 25.2792 Acres) of land, more or less.

Date: 06/11/07




Michael J. Losik, P.E., L.S.
President
LOSIK ENGINEERING DESIGN GROUP, LTD.
19035 W. Capitol Drive - Suite 201
Brookfield, WI 53045
Phone: (262)790-1480 Fax: (262)790-1481