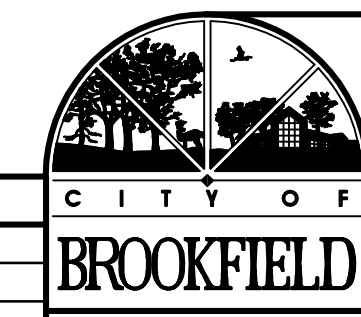
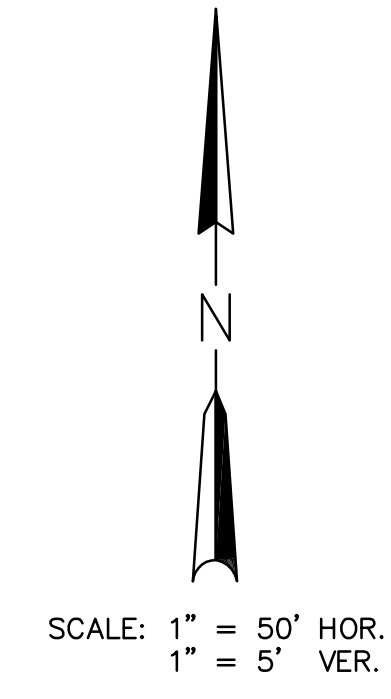


# SAMPLE

## ESTIMATE OF QUANTITIES

18" SANITARY SEWER RELAY (GRANULAR BACKFILL)	356 L.F.
18" SANITARY SEWER RELAY (SPOIL BACKFILL)	476 L.F.
18" SANITARY SEWER RELAY (SLURRY BACKFILL)	149 L.F.
18" SANITARY SEWER IN 30" STEEL CASING PIPE (JACK AND BORE)	40 L.F.
SANITARY MANHOLE	86.5 V.F.
RELAY SANITARY LATERAL (6")	221 L.F.
4" ASPHALT ROAD RESTORATION	170 S.Y.
REMOVE AND REPLACE CATCH BASIN	1 EA.
INLET SEDIMENT BARRIERS	9 EA.
EROSION BALES DITCH CHECKS	0 L.F.



## ENGINEERING DIVISION

### BEVERLY HILLS SANITARY RELAY

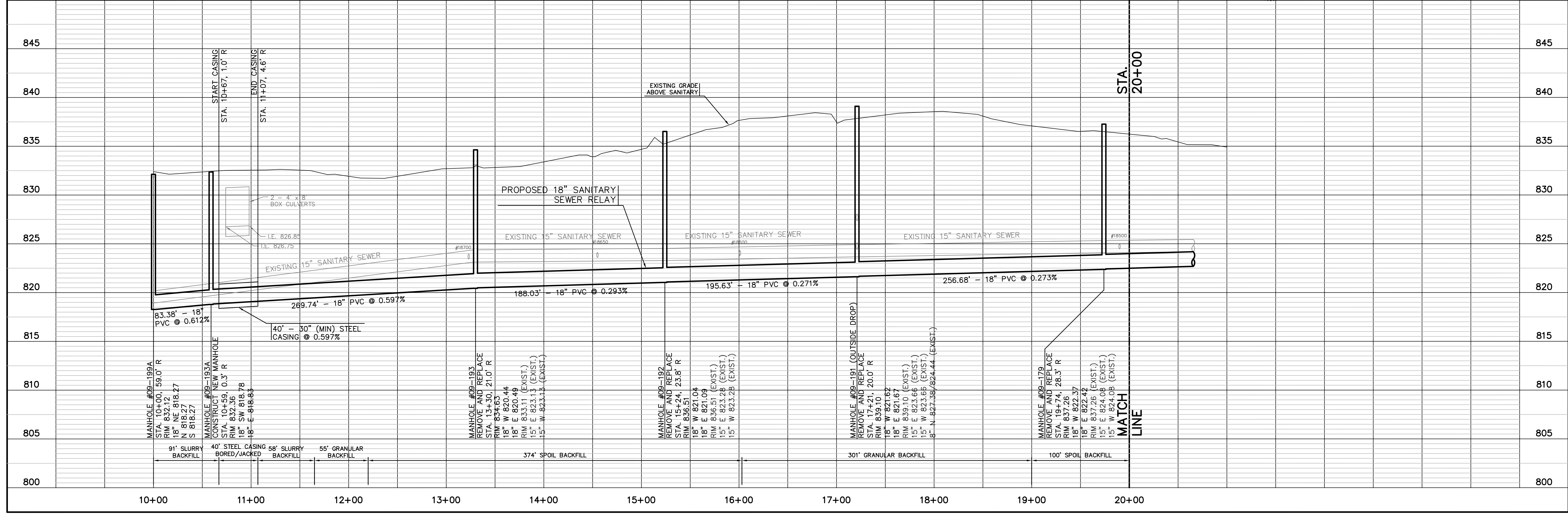
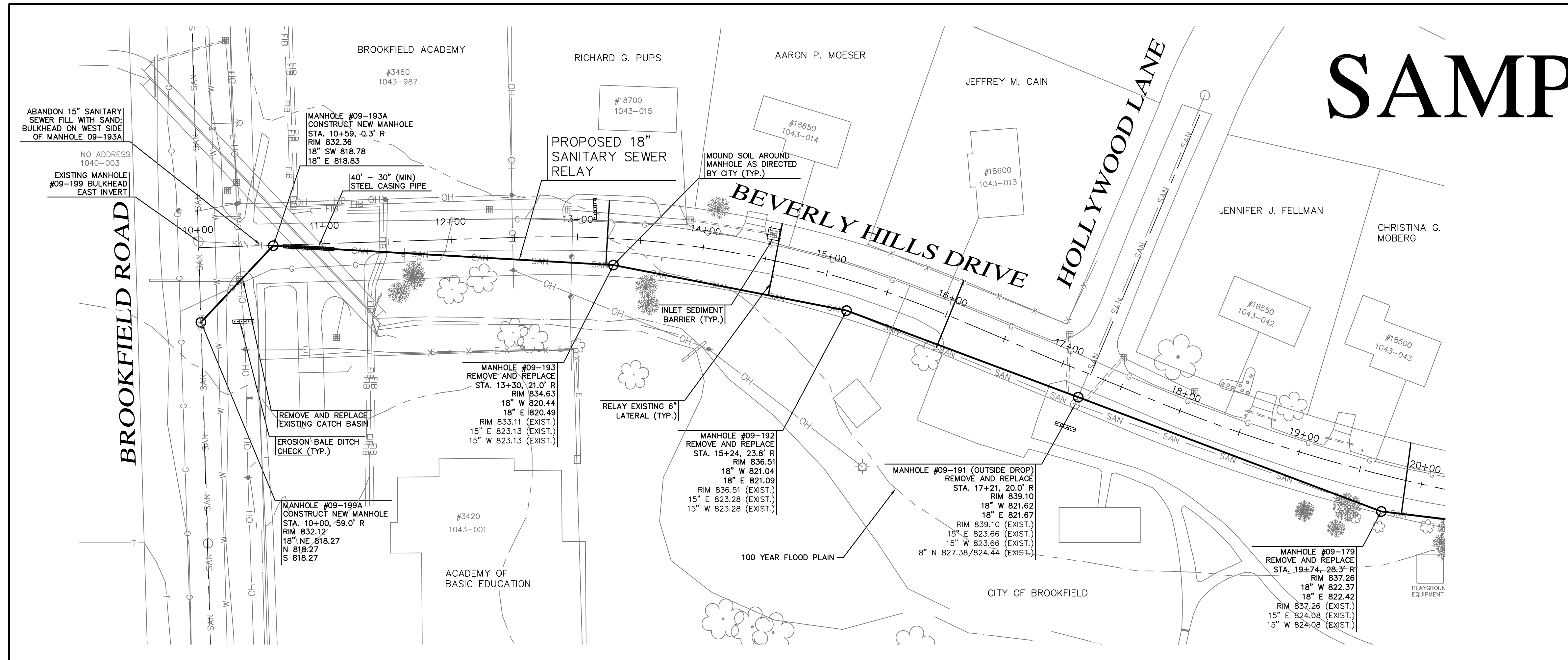
IN: BEVERLY HILLS DRIVE  
FROM: BROOKFIELD ROAD  
TO: 300' EAST OF HOLLYWOOD LANE

PROJECT NO.	SA-05-03	DATE COMPLETED	
DRAWN	SNN	AS-BUILT BY	DATE
DESIGNED	JRC	YEAR INSTALLED	
CHECKED	JMC	INSPECTOR	
SHEET NO.	4 OF 6 SHEETS	CONTRACTOR	

REVISIONS

DATE	BY

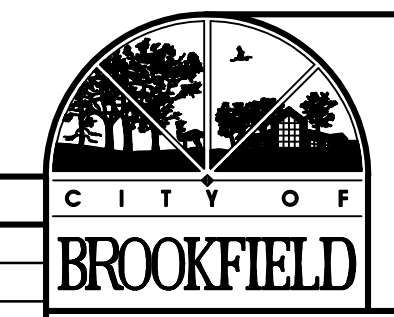
JOHN R. CARLSON  
#35184  
Milwaukee Wis.  
PROFESSIONAL ENGINEER



ESTIMATE OF QUANTITIES	
8" PVC WATER MAIN (CRUSHED STONE BACKFILL)	221 L.F.
8" PVC WATER MAIN (SPOIL BACKFILL)	756 L.F.
8" GATE VALVE	3 EA.
HYDRANT ASSEMBLY	0 EA.
CONNECT TO EXISTING WATER MAIN	0 EA.
1 1/4" HDPE WATER LATERALS (TRENCHLESS)	189 L.F.
1 1/4" HDPE WATER LATERALS (OPEN CUT)	61 L.F.
1 1/2" WATER SERVICE CONNECT	9 EA.
1 1/2" HDPE WATER LATERAL	50 L.F.
1 1/2" WATER SERVICE CONNECT	1 EA.
4" ASPHALT ROAD RESTORATION	0 S.Y.
ASPHALT DRIVEWAY RESTORATION	90 S.Y.
CONCRETE DRIVEWAY RESTORATION	60 S.Y.
INLET SEDIMENT BARRIERS	1 EA.
EROSION BALES DITCH CHECKS	27 EA.
EROSION MAT	550 S.Y.



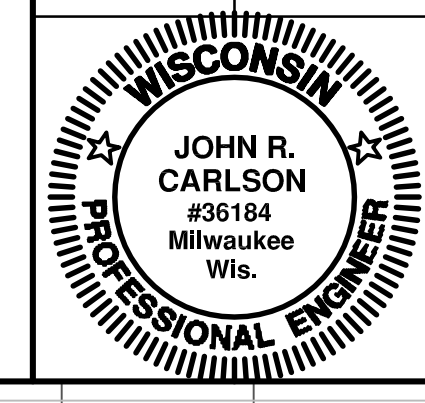
SCALE: 1" = 50' HOR.  
1" = 5' VER.



ENGINEERING DIVISION

MAPLEHILLS/MIEROW HIGHLANDS WATERMAIN

IN: MAPLEHILL LANE	DATE COMPLETED
FROM: WEST LANE	AS-BUILT BY DATE
TO: 1000' NORTH OF WEST LANE	YEAR INSTALLED
PROJECT NO. W-07-02	INSPECTOR
DRAWN SNN	CONTRACTOR
DESIGNED JRC	
CHECKED JMC	
SHEET NO. 7 OF 13 SHEETS	



# SAMPLE

